

Market Realty, Inc.

(979)289-2159
Fax (979)289-2159

400 N Main
Burton, Texas 77835
www.marketrealty.com

e-mail address
burton@marketrealty.com

CR 134 Milam County, Texas



CR 134 Milam County, Texas

663 acres of rolling hilltop in Milam County, close to Highway 77 on CR 134 between Cameron and Rosebud in the Burlington community. Several size options are available for purchase. The terrain is upland rolling hills with distant views, 8/10 of a mile of road frontage on CR 134. Native vegetation and improved grasses provide excellent habitat for wildlife. Ranch is great for bison, cattle and hunting for doves, hogs and deer. For more information call Roger Chambers at 979-830-7708 or Susan Kiel at 979-289-2159/979-251-4078/ 979-836-9600.

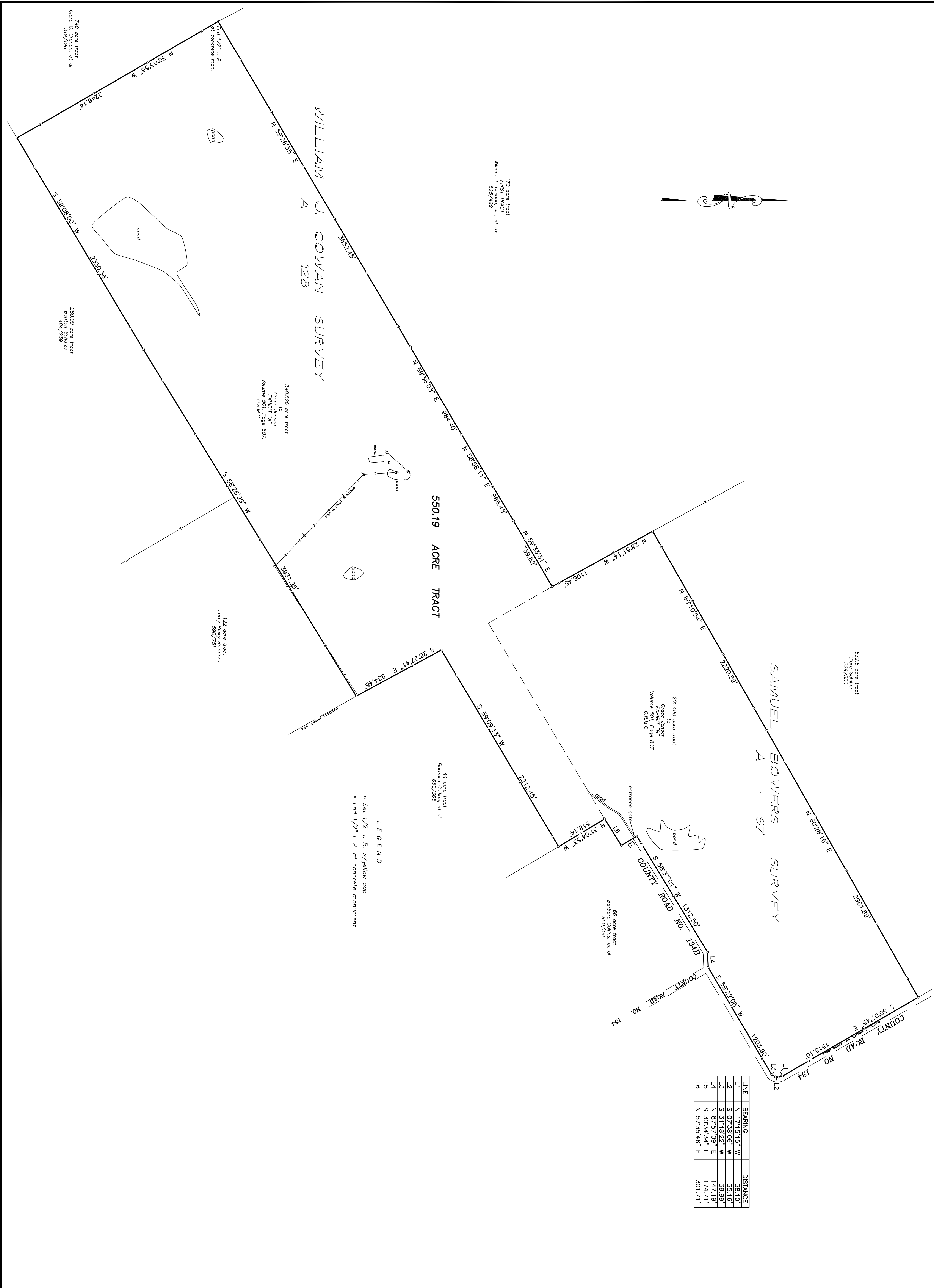
All 663 acres \$1,161,790

or 113 ac \$1,975/ac

"THE MARKET TEAM"

Listing Broker: Roger Chambers
Broker Associate/Assistant: Susan S. Kiel

The information contained herein, while obtained from sources deemed reliable, is not warranted by MARKET REALTY, INC. Property is subject to prior sale, change, or withdrawal from market without notice.



532.9 acre tract
Core Schiller
229/250

201.490 acre tract
Grace Jensen
EXHIBIT "B"
Volume 501, Page 807,
O.N.M.C.

44 acre tract
Barbara Collins, et al
650/365

66 acre tract
Barbara Collins, et al
650/365

348.826 acre tract
Grace Jensen
EXHIBIT "A"
Volume 501, Page 807,
O.N.M.C.

122 acre tract
Larry Sanders
590/751

740 acre tract
Clara G. 319/196
et al

280.09 acre tract
Benton Schulze
484/239

LEGEND
 o Set 1/2" I. R. w/ yellow cap
 • Fnd 1/2" I. P. of concrete monument

LINE	BEARING	DISTANCE
L1	N 17°15'15" W	38.10'
L2	S 07°38'06" W	35.16'
L3	S 31°48'22" W	39.99'
L4	N 87°57'09" E	147.19'
L5	S 30°34'34" E	174.71'
L6	N 57°35'46" E	301.71'

REVISIONS

JARRARD SURVEYING
 LAND SURVEYOR
 115 N. CENTRAL AVENUE, SUITE 2, P. O. BOX 1135
 CAMERON, TEXAS 76520 (254) 697-3646 FAX (254) 697-8776

BOUNDARY SURVEY
 ON A 550.19 ACRE TRACT OF LAND OUT OF THE SAMUEL BOWERS SURVEY, A-97, AND THE WILLIAM J. COWAN SURVEY, A-128, MILAM COUNTY, TEXAS.
 SURVEYED FOR: PHILLIP TOWNSEND

DATE: 5-16-05
Proj. No. 2857
Dwn. By: SDJ
App. By:
Ref.: ATT. G.P.S.
SHT. OF

Scale: 1" = 400'

Drawing No. D - 697